

CERTIFICATE OF LOCATION OF GOVERNMENT CORNER

NORTHEAST Corner of Section 12, Township 108, Range 42, 5TH P.M.

STATE OF MINNESOTA, County of MURRAY

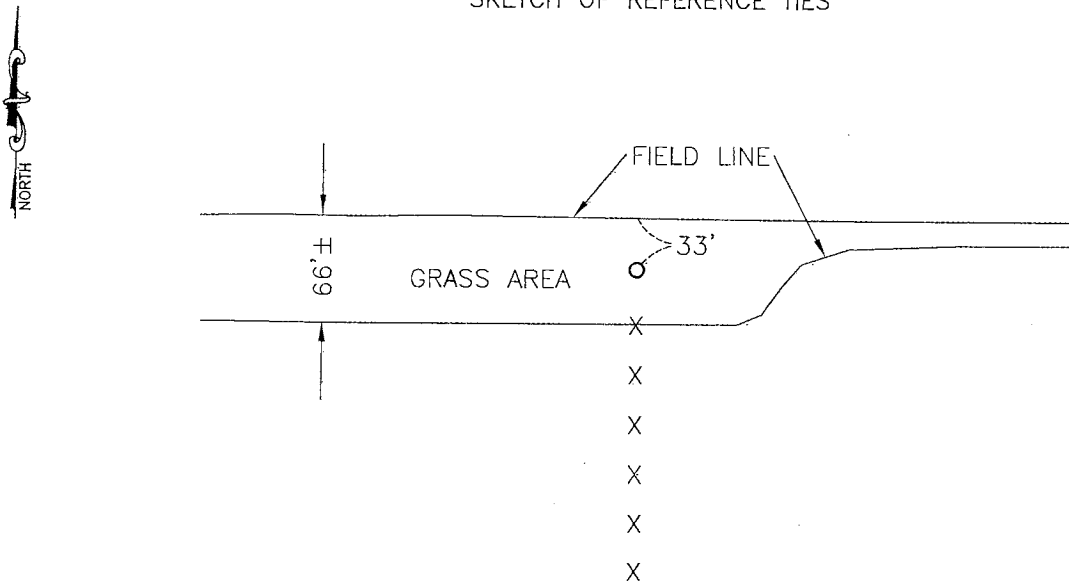
At the corner location shown on the sketch:

On _____ found a _____
DATE

left monument as found, lowered monument, removed monument (explain)

On 07-12-2010 placed a 1" PIPE WITH SEAL #43844
DATE

SKETCH OF REFERENCE TIES



Minnesota State Plane Coordinate
System Murray County Datum
NAD83 (1996)
N: 221692.559
E: 485110.401

Statement of evidence relative to this corner location is on back of page.

I hereby certify that this document and the data contained herein was prepared by me or under my direct supervision.

David B. ... 1/12/11
SIGNATURE DATE

Registration No. 43844

Land Surveyor, Professional Engineer
 County Surveyor, County Engineer

OFFICE OF THE COUNTY RECORDER
County of _____

I hereby certify that this document was filed in the Co. Recorders office at _____ .M on the _____ day of JAN 18 2011 A.D. 20 _____

County Recorder *James V. Johnson*
By _____, Deputy

DOCUMENT NO. _____

Statement of Evidence

In 1861, J.W. Myers did the original survey of the east line of the township.

In October, 1915, J. R. Johnston found a 6" tile marking the corner. It was 33' south of the fence.

On July 12, 2010, Bueltel-Moseng Land Surveying set a 1" pipe with seal #43844 thirty-three feet south of the field line to the north and in line with the fence to the south.